



# Lighting

Please note that all lights have either warm white LED's fitted or recommended LED's to be ordered separately. All LED's operate from 10 to 30 volts DC, except Eyelid Light. See light descriptions and page 48 for full LED listings.

**NEW**



## Oval Eyelid Light

This classically styled, surface mounted, light is manufactured in polished brass and fitted with a frosted lens. Supplied with a 70 lumen LED strip as standard, additional length can be ordered to double the light output. Available in 12v and 24v, these are ideal for berth, step or walkway lighting wherever unobtrusive lighting is required.

	Brass	Chrome	Dimensions	Projection
12v	7605/BR/12	7605/CP/12	5¾" x 3¾" 148mm x 100mm	1½"
24v	7605/BR/24	7605/CP/24		40mm
LED Strip	7605/LED/12	7605/LED/24	50mm long x 15mm wide	



## Recessed Square Berth Light - with switch

Polished cast brass and fitted with a frosted glass and switch. This recessed pattern requires a depth of 1" (25mm). Fitted with 2 warm white 60 lumen LED's as standard.

Brass	Chrome	Height	Width	Projection
7614/BR	7614/CP	5½" x 5" 140 x 125mm	5¼" x 4½" x 1" 134 x 105 x 25mm	1½" 38mm

**NEW**



## Recessed Square Berth Light - without switch

For remote switching, especially when 2 or more lights are fitted in a cabin, this popular light is now available without switch. Polished brass front with frosted glass. Fitted with 2 warm white 60 lumen LED's as standard.

Brass	Chrome	Height	Width	Projection
7615/BR	7615/CP	5½" x 5" 140 x 125mm	5¼" x 4½" x 1" 134 x 105 x 25mm	1½" 38mm



## Teardrop Berth Light

Polished cast brass and fitted with a frosted dome glass and switch, this unique light is fitted with a warm white 60 lumen LED's as standard.

Brass	Chrome	Height	Width	Projection
7246/BR	7246/CP	5¾" 145mm	3" 75mm	2" 50mm



## Brass Bracket Light (without switch)

This graceful light is cast in brass with a polished finish and supplied with a frosted bell glass and SBC (BA15d) bulb holder. Will accept our 60 lumen warm white LED 6001/12/60 see page 48.

Height with glass 4.1¼" (108mm). Projection 3.1½" (89mm)

Part No. 7215/BR Brass      Part No. 7215/CP Chrome



## Brass Bracket Light (with switch)

A switched version of the light above. Polished cast brass and supplied with a frosted bell glass, SBC (BA15d) bulb holder and toggle switch. Will accept our 60 lumen warm white LED 6001/12/60 see page 48.

Height with glass 5" (125mm). Projection 5" (125mm).

Part No. 0396/BR Brass      Part No. 0396/CP Chrome



## Deck Head Lights - 'Jelly Mould'

These high quality period lights are now available in a variety of versions that can be mixed throughout the boat for maximum practicality and uniformity. Utilising the same genuine frosted glass, the heavy cast brass housing can be supplied with or without switch and in a choice of finishes. Suitable for many kinds of traditional craft.

- With or without switch
- Polished brass, chrome or nickel plate
- Full back case or low profile
- Fitted LED's 12v - 30v as standard
- Red/White option for night vision



### Without switch

Deep cast brass base that can be surface mounted or recessed up to the bezel level. Fitted warm white LED 165 lm.

Brass	Chrome	Overall Diameter	Projection
0391/BR	0391/CP	6¼" 170mm	¾" 58mm



### With switch

Deep cast brass base as above with switch fitted on the side. Fitted warm white LED 165 lm.

Brass	Chrome	Overall Diameter	Projection
0392/BR	0392/CP	6¼" 170mm	¾" 58mm



### Night Vision (with switch)

This light is the same construction as the switched 0392 above, but comes fitted with a red/white LED. When first switched on it always displays the red light first to preserve your night vision. If white light is required, simply turn off and on again and the white light will come on. No special wiring is required.

Brass	Chrome	Overall Diameter	Projection
0392/BR/RW	0392/CP/RW	6¼" 170mm	¾" 58mm



### Low Profile (without switch)

This low profile version is ideal for when headroom is restricted as it has a projection of only 1½" (40mm), which is ¾" (18mm) less than the standard light. To achieve this a flat stainless steel base is utilised which is concealed by the same brass bezel and glass as above.

Fitted warm white 165 lm. No switch.

Brass	Chrome	Overall Diameter	Projection
0393/BR	0393/CP	6¼" 170mm	¾" 58mm



# Lighting



0330



7502

## Art Deco Interior Lights

Two styles of attractive period lights with genuine moonstone glass. The 0330 has a chrome back plate and the 7502 has a front silver trim. Both are fitted with 2 warm white LED's (1 x 210 lm and 1 x 60 lm) to give a pleasing even light.

Part No.	Length	Width	Projection
0330	8 7/8" 210mm	3 3/8" 95mm	2 1/2" 60mm
7502	8 1/2" 215mm	2 7/8" 73mm	2 3/8" 66mm



## Weatherproof Guarded Light

This traditional light is of all brass construction with a polished finish. The strong guard screws onto a seal in the base and protects the clear glass. Suggested LED 6001/12/60 60 lm.

Part No.	Length	Flange Diameter	Bulb Holder
7203/BR/M/CL	4 7/8" 105mm	3 1/6" 80mm	SBC



## Weatherproof Guarded Light (bulkhead fitting)

Similar to the above, this light is of all brass construction with a 90 degree bracket for fixing to a bulkhead. Suggested LED 6001/12/60 60 lm.

Part No.	O.A. Length	Projection	Bulb Holder
7207/BR/M/CL	6 1/2" 165mm	3 1/2" 85mm	SBC



## Weatherproof Guarded Bulkhead Light

Cast in brass with traditionally wired hinged door secured with three brass swing bolts with wing nuts on to a rubber seal. Polished outer surface and fitted with clear glass, SBC bulb holder and brass cable gland. This is a deluxe, hand made light of unique character. Suggested LED 6001/12/60.

Brass	Body Diameter	O.A. Diameter	Projection
7425/BR	4 1/2" 114mm	6" 150mm	2 1/2" 64mm



## Bulkhead Light - Powder Coated

Cast in aluminium and fitted with an SBC bulb holder, cable gland and front seal. Powder coated either white with clear glass and brass gland or matt black with frosted glass and chrome gland. Suggested LED 6001/12/60.

White with Clear Glass	Black with Frosted Glass	Body Diameter	O.A. Diameter	Projection
7425/AL/WH	7425/AL/BK	4 1/2" 114mm	5 1/2" 140mm	2 3/4" 70mm



## Mast Light - New Style

**NEW**

A new development of this classic light now means that it can be wired directly to 110/220v AC. Ideal for larger vessels where mains voltage is often installed or for smaller boats linked to shore power. Also suitable for pontoons and shore side lighting, avoiding the need to fit a transformer.

12v/24v DC supply versions available as before.

Cast in bronze with a choice of finishes or in anodised aluminium. The base of the light is angled up 10 degrees to aid the throw of light and a hinged glazed door with a seal is fitted. Back gasket also included. Rated IPX5



## Mast Light - 110/220v AC

Available rear wired only with a GU10 lamp holder included, which offers the opportunity of selecting from a wide range of LED's in terms of angle and strength of light. This makes it possible to fit the correct LED taking into account the height the light is mounted from the surface to be lit and the spread and light brightness required.

Part No.	Material	Height	Width	Projection
0760/AL/AN	Anodised Aluminium	5¼" 135mm	3" 75mm	¾" 81mm
0760/GM/PO	Bronze/Polished			
0760/GM/SD	Bronze/Sand Blasted			
0760/CP	Chrome on Bronze			



## Mast Light - 12v/24v DC

Available for wiring through a top water tight gland or through the back, this light is supplied with a G4 lamp holder for low voltage LED's of varying degrees of spread and brightness.

With Gland	Rear Wired	Material	Height	Width	Projection
0761/AL/AN/TOP	0761/AL/AN	Anodised Aluminium	5¼" 135mm	3" 75mm	¾" 81mm
0761/GM/PO/TOP	0761/GM/PO	Bronze/Polished			
0761/GM/SD/TOP	0761/GM/SD	Bronze/Sand Blasted			
0761/CP/TOP	0761/CP	Chromed Bronze			



## Step Light

Recessed step or bulkhead light with heavy ribbed glass and polished cast brass guard. Also available in chrome. Fitted SBC bulb holder which can accept our 60 lm LED 6001/12/60. Projection only 1" (25mm).

Brass	Chrome	Height	Width	Projection
7576/BR	7576/CP	5½" 140mm	4¾" 111mm	1½" 38mm





# Lighting



## Brass Gimbal Lamp

Manufactured from brass, which is then polished and lacquered and fitted with a burner with 1" wide wick. The weighted font holds 350ml of fuel and will keep the lamp burning for approximately 24 hours. Complete with smoke shade and arm. Overall Height: 9½" (240mm). Projection: 6¼" (160mm).

**Part No. 0308/BR**



## Globe Lamp

Constructed of solid brass in traditional style. The glass globe is 7" (175mm) in diameter and the round burner gives an even bright light. The oil reservoir holds 250ml and will burn for approximately 35 hours.

**Part No. 0191/BR**



## Dietz Hurricane Lamps

The original deck, cabin or emergency oil lamp. One version is made of tinned and lacquered steel and is a very inexpensive lamp for all vessels for general purpose or emergency use. This lamp is also available in all brass construction for longer life and higher quality. Oil container 210ml. Burn time approx 11 hours. Flat wick ½" (12.5mm).

**Part No. 0234** Tinned steel

**Part No. 0234/BR** Brass

## Spare Glasses

We can supply spare glasses for many of the lights we sell. Please select from the table below by lamp number.

Part Number	To suit light
0041/CL	7203/BR/M & 7207/BR/M
0044/FR	7426 teardrop berth light
0234/GL	0234 hurricane lamp
0308/GL	0308/BR gimbal lamp
0390/OO/GLASS	0391, 0392 & 0393 jelly mould lights
0445	0396 & 7215 bracket lights
0760/OO/GL/CL	0760 mast lights
7425/GL/CL	7425 bulkhead lights (brass & aluminium)
7614/OO/GL	7614 recessed berth light



## Lamp Wick

Supplied by the metre.



Part Number	Width
0096/00/06	¼" 6mm
0096/00/10	⅜" 10mm
0096/00/12	½" 12mm
0096/00/16	⅝" 16mm
0096/00/19	¾" 19mm
0096/00/25	1" 25mm
0096/00/27	1⅛" 27mm
0096/00/32	1¼" 32mm



## Navigation Lights - Oil

Traditionally made oil lights in unlacquered copper with brass fittings. They will run on paraffin or lamp oil and will complement any traditional craft. Fitted with 4" (100mm) dioptic lens.

Part Number	Lamp	Overall Height
0151/CO/100/PO	Port	9½" 240mm
0151/CO/100/ST	Starboard	
0152/CO/100	Masthead	
0157/CO/100	Stern	9¾" 248mm
0158/CO/100	Anchor	

## Navigation Lights - Electric

A selection of traditional electric navigation lights in gunmetal or brass.



## Miniature Navigation Lights

Cast in gunmetal with a polished finish and also available chrome plated. These electric navigation lights have a plain lens and SBC bulb holder. Available in masthead and stern.

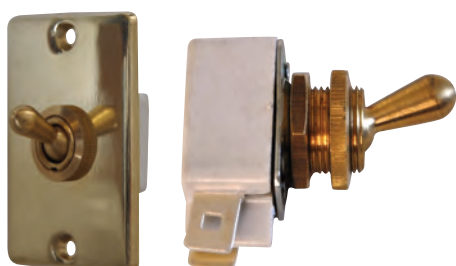
Gunmetal	Chrome	Type	Dimensions O.A. Height x Diameter
9733/GM	9733/CP	Masthead	5¼" x 3" 133 x 75mm
9734/GM	9734/CP	Stern	

## Brass Navigation Lights

This range of cast brass navigation lights are approved by the Italian RINA for boats up to 12 metres. They are supplied complete with 12v 18w bulbs and are available brass or chrome finish.



Brass	Chrome Plated	Type	Height	Width	Projection
0111/BR/P	0111/CP/P	Port	3½" 90mm	2¼" 70mm	2⅝" 62mm
0111/BR/S	0111/CP/S	Starboard			
0112/BR	0112/CP	Masthead			
0113/BR	0113/CP	Stern			



## Switches

Flush switch rated at 2 amps. Optional back plate 1½" x 2" in brass or chrome.

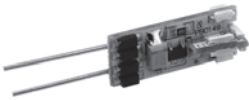
Brass	Chrome	Type
0260/BR	0260/CP	With back plate
0362/BR	0362/CP	Without back plate



# Lighting

## Replacement LED's

All LED's listed here are warm white to preserve as much as possible the integrity of our traditional lights. They all work on a voltage range from 10 volts to 30 volts and offer a significant power saving over standard filament and halogen bulbs and are often interchangeable with them. Other variations are available on request.



Part No.	Cap Type	LED's	Lumens	Power Draw Watts	Body Dims mm's
6000/12/60	G4	12	60	0.6	20 long 8.2 dia.

As fitted to our lights 7246, 7614, 0330 and 7502



Part No.	Cap Type	LED's	Lumens	Power Draw Watts	Body Dims mm's
6000/18/210	G4	18	210	1.8	23 long 20 dia.

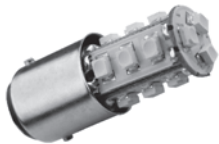
As fitted to our lights 0330 and 7502



Part No.	Cap Type	LED's	Lumens	Power Draw Watts	Dims mm's
6001/12/60	SBC	12	60	0.6	48 LOA 25 glass dia.

Suitable for our lights 0396, 7215, 7203, 7207, 7425 and 7576.

They will also suit any lamp with an SBC bulb holder.



Part No.	Cap Type	LED's	Lumens	Power Draw Watts	Dims mm's
6001/15/105	SBC	15	105	1.4	42 LOA 15 cap dia.

A brighter alternative to the one above. Will fit any SBC bulb holder.



Part No.	Cap Type	LED's	Lumens	Power Draw Watts	Dims mm's
6002/10/165	G4	10	165	2.2	40 dia.

As fitted to our lights 0391, 0392, and 0393.

The pins are 90 degrees from the centre back.



Part No.	Cap Type	LED's	Lumens	Power Draw Watts	Dims mm's
6002/15/190/RW	G4	12 white 3 red	190	2.4	44 dia.

A special unit which always lights red when first switched on but when turned off and on again will light warm white. Ideal for preserving night vision.

The pins are 90 degrees from the centre back.



Part No.	Cap Type	LED's	Lumens	Power Draw Watts	Dims mm's
6005/18/560	G4	18	560	7.0	49 dia.

Suitable for our 0761 mast light as a low wattage alternative to halogen.

**Delite of Denmark**, incorporating E S Sorensen, produce a wide selection of lamps, instruments and accessories, all of which are available through Davey & Company. A selection is shown below and a full catalogue is available on request or on-line at [www.delite.dk](http://www.delite.dk)



**Sampanino**

A simple and practical oil lamp, made in stainless steel and incorporating a heat shield, shade and carrying loop. This is a go anywhere, use anywhere lamp. Fitted with a Perko burner on a 325ml reservoir.

Height: 330mm  
Burn Time: 20 hours  
**ES/650801**



**Ship's Lamps**

Historic and elegant, these lamps are beautifully made and available in brass or chrome.

Height: 350mm  
Burn Time: 9 hours.  
**ES/500221 Brass**  
**ES/500202 Chrome**



**Passenger Lamp**

This non-gimballing brass oil lamp was often to be found in 19th century trains and ships.

Height: 340mm  
Burn Time: 9 hours  
**ES/500101**



**Ellipse 11**

A classic Scandinavian design to bring light and elegance to any table.

Stainless Steel.  
Height: 230mm  
Burn time: 15 hours  
**ES/650302 Polished**  
**ES/650303 Brushed**



**Smoke Bell**

A small brass shade that clips on to any oil lamp chimney. Brass.

**ES/100600**



**Stormglass**

Dating from 1750, this unusual and interesting instrument can indicate weather changes up to two days in advance. A version of this device was used on the 'Beagle' with Darwin in 1831.

Supplied complete with mount.  
Height: 140mm

**ES/550401 Brass**  
**ES/550404 Polished SS**  
**ES/550405 Brushed SS**



**Galileiglass**

A novel way to check the temperature at a glance. Tags hanging from the balls show the relevant temperature.

Supplied complete with mount.  
Height: 140mm

**ES/550701 Brass**  
**ES/550704 Polished SS**  
**ES/550705 Brushed SS**